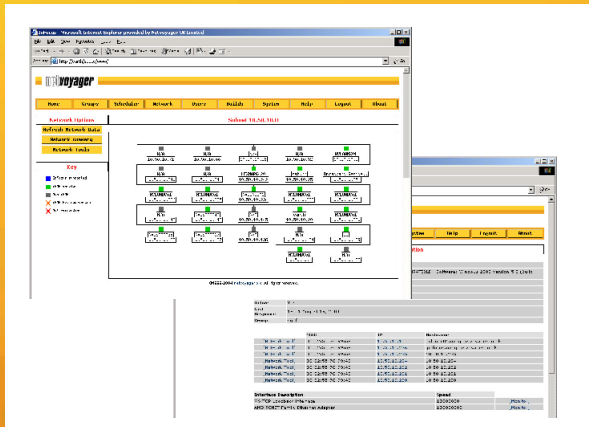


Powerful and feature rich Thin Client management tool

Empowering enterprise management in one simple tool for Netvoyager thin clients and SNMP enabled devices.



Key Business Benefits

- + Annual cost saving across the business
- + Reduce total cost of ownership (TCO)
- + Increase return on investment (RoI)
- + Single management tool for multiple uses
- + Manage the enterprise from any web-enabled device

Infrastructure Features

- + Supports all Netvoyager appliances
- + Available in software and in pre-installed format
- + Easy to install and update
- + Simple web based interface
- + Manages thousands of appliances
- + Allows appliance grouping
- + Task scheduling
- + Supports push and pull software update methods
- + SNMP compatible
- + Unlimited number of managed devices, subject to disk space and network capacity
- + Unlimited number of networks and subnets
- + Device discovery through SNMP and broadcasts
- + Device reporting through list and graphical methods
- + Asset management
- + List, group, sort and print assets
- + Configurable automatic alerts delivered by email
- + Logging of all aspects of access and updates
- + Flexible user-based security model

Minimum Server Requirements

- + 2.0 Ghz Pentium 4 class processor
- + 1GB RAM
- + 250MB program & data disk space
- + 10/100Mbps network port
- + Redhat, SuSe, Debian or Windows Server 2003

Introducing the InFocus™

InFocus is a comprehensive, web-based, management tool for Netvoyager thin client devices. It can be accessed from any browser-enabled device, empowering IT departments to manage, maintain and support their Netvoyager thin client assets. Furthermore, InFocus provides SNMP network tools to allow monitoring of other SNMP manageable devices.

Local management with Enterprise-Wide Control

The InFocus web interface enables you to manage your thin clients wherever they are deployed in your enterprise. It is the first web-enabled enterprise level thin client management tool to fully support all Netvoyager products irrespective of their operating system base.

InFocus is a simple, easy to install and use application. Its intuitive web-based interface makes it easy to manage thousands of appliances.

InFocus is based on proven technology and Internet standards, which ensures interoperability with existing systems. It is available as a software package or in a ready-to-go InFocus server appliance. InFocus is scalable, can be distributed or centralised, works easily across multiple subnets, whether local or wide area.

InFocus provides device discovery of Netvoyager and other SNMP enabled third-party products, with the facility to sort lists or graphically display the devices and group them. InFocus also provides remote software update and remote device configuration of Netvoyager thin clients.

